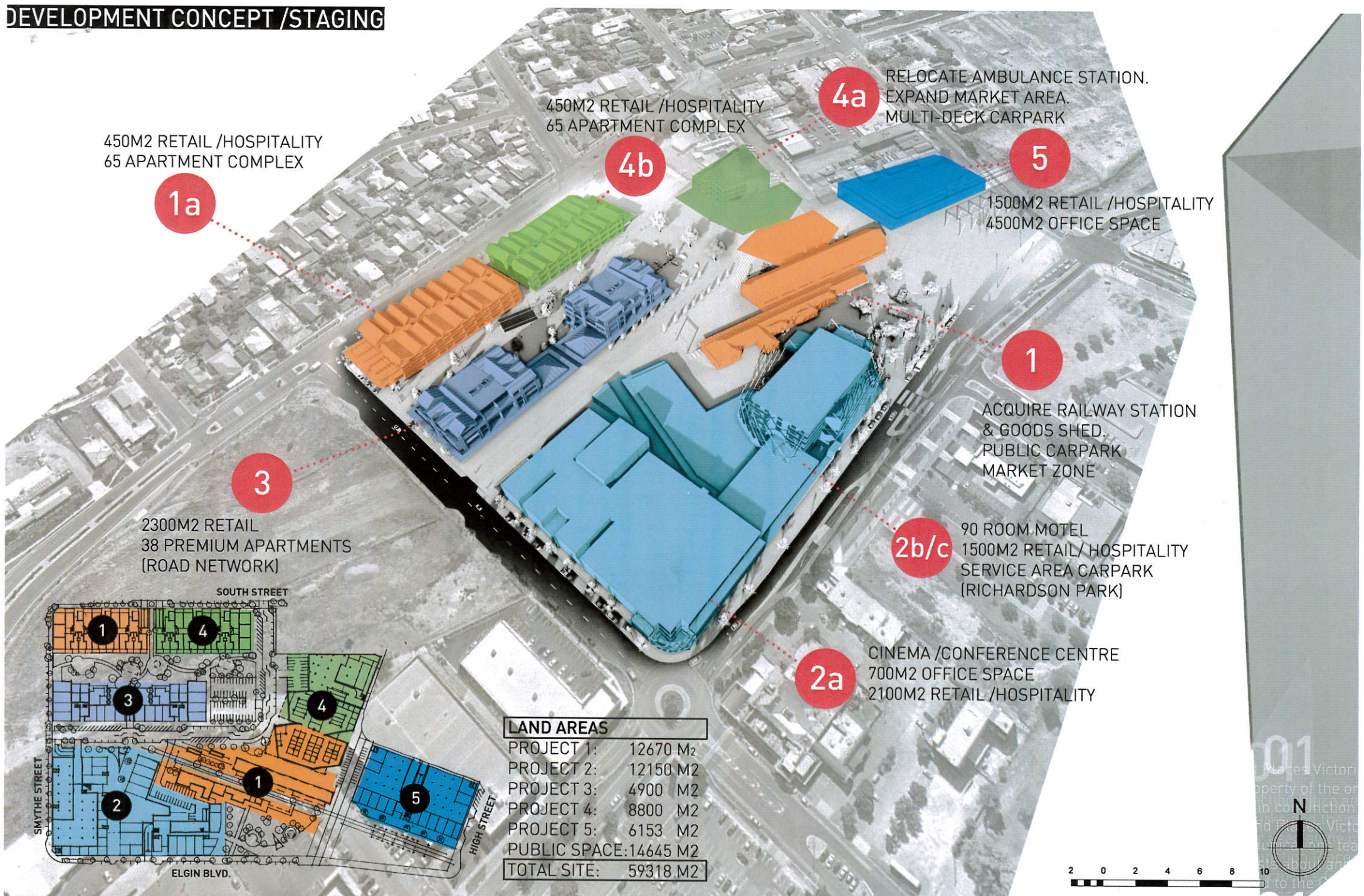
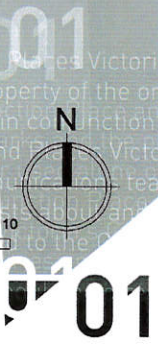
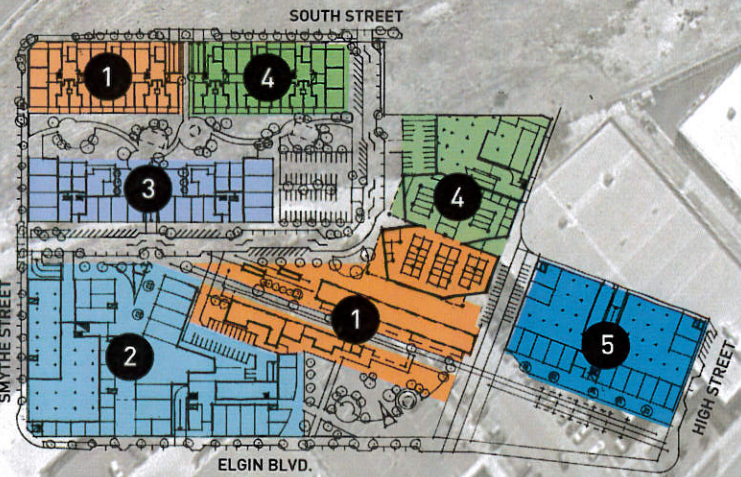


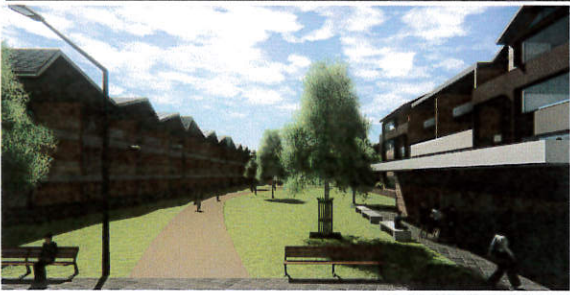
# DEVELOPMENT CONCEPT /STAGING



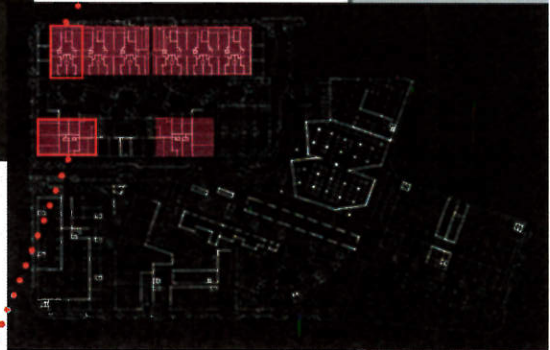
LAND AREAS	
PROJECT 1:	12670 M <sub>2</sub>
PROJECT 2:	12150 M <sub>2</sub>
PROJECT 3:	4900 M <sub>2</sub>
PROJECT 4:	8800 M <sub>2</sub>
PROJECT 5:	6153 M <sub>2</sub>
PUBLIC SPACE:	14645 M <sub>2</sub>
<b>TOTAL SITE:</b>	<b>59318 M<sub>2</sub></b>



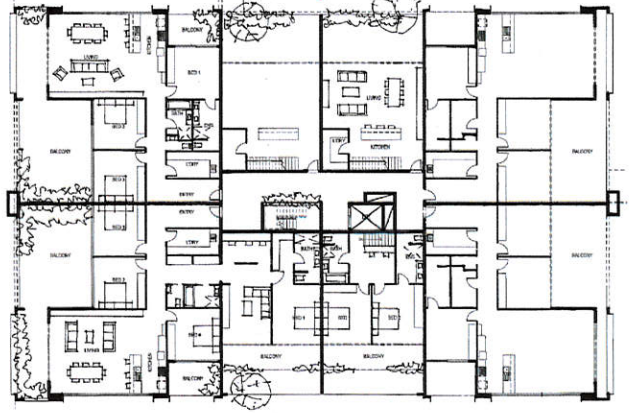
# APARTMENTS



SOUTH ST. APARTMENTS



PREMIUM APARTMENTS

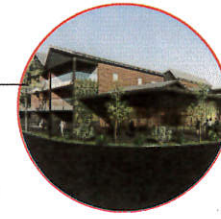


# LANDSCAPING

- "THE SIDINGS" PARK CONCEPT**  
 4200M2 INCORPORATING:
- Childrens Playground
  - Replica Watertank for landscape Landmark & Irrigation
  - BBQ Areas with Solar Panel roof cover

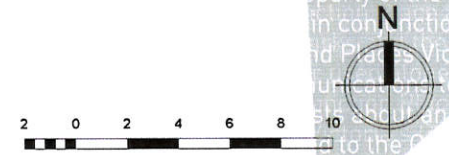


VIEW TO STATION ENTRY

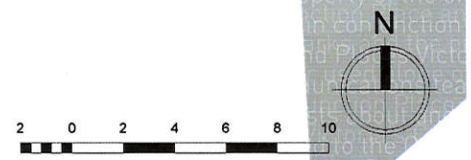
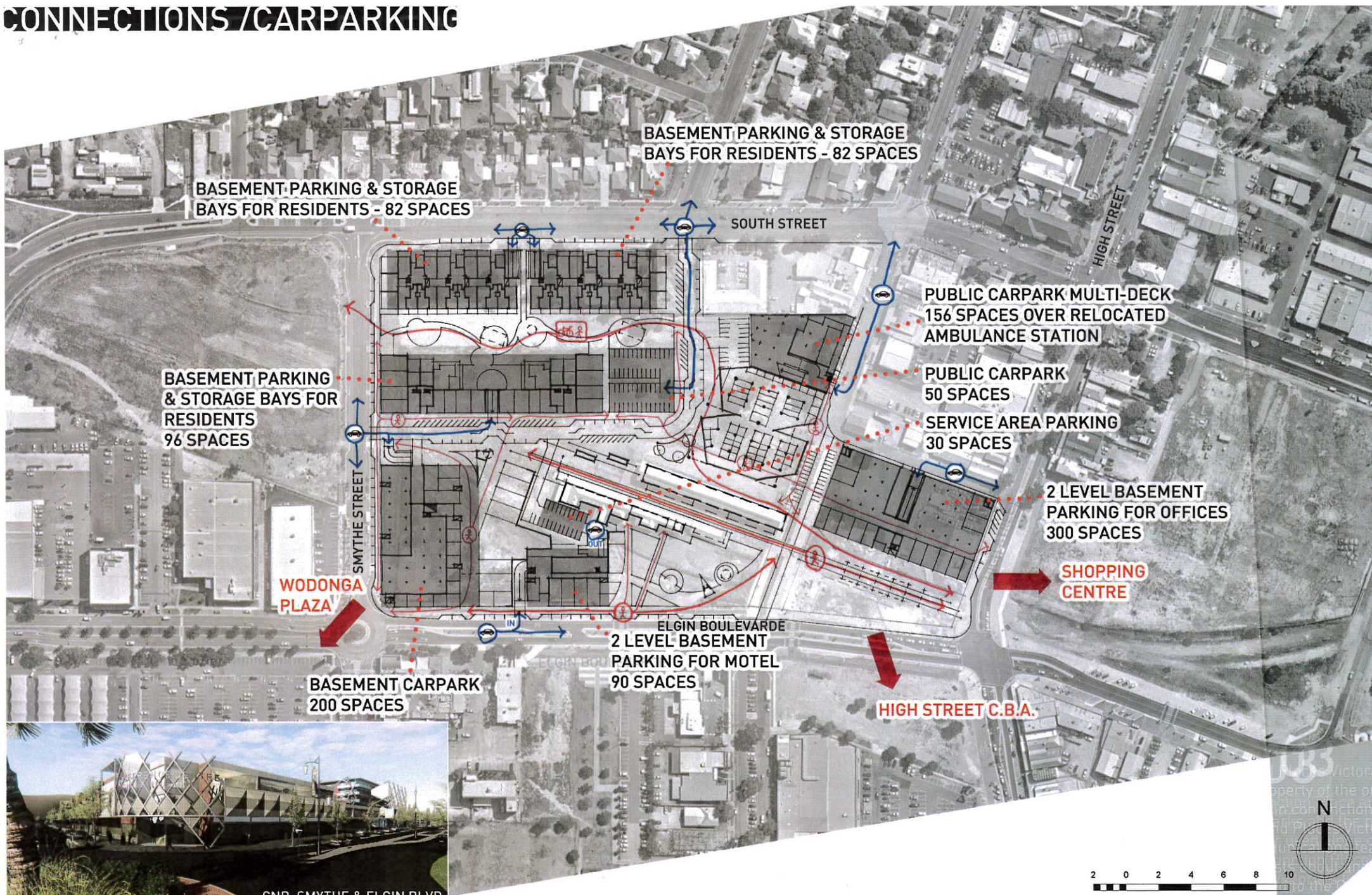


- "PROMENADE WEST"**
- Historical Railway Carriages (Housing Hospitality)
  - Erect Signal Gantry to "Bookend", West End of promenade
  - Replica Watertank, Landmark & Public Toilet

- "RICHARDSON PARK" (2625m2)**
- Childrens Playground
  - Replica Water Tank
  - Public Ampitheatre
  - Covered Picnic Area



# CONNECTIONS / CARPARKING



# FLOOR LEVELS

- RESIDENTIAL
- COMMERCIAL
- RETAIL & CINEMA
- MARKET
- MOTEL & CONFERENCE
- AMBULANCE / CIVIC
- OFF-STREET PARKING

